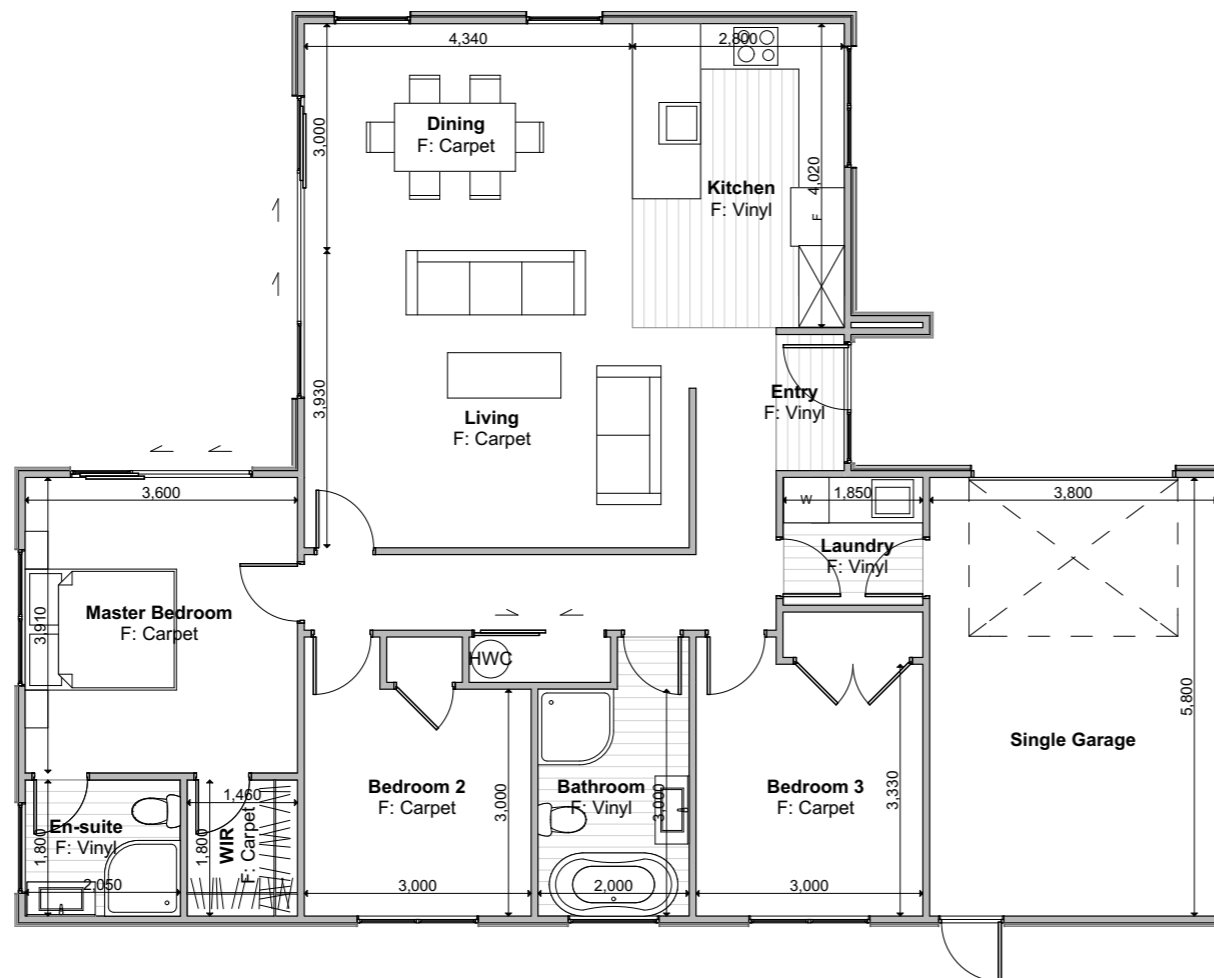


MANAPOURI GROVE
• KELSON •

LOT: 84
Ranfurly





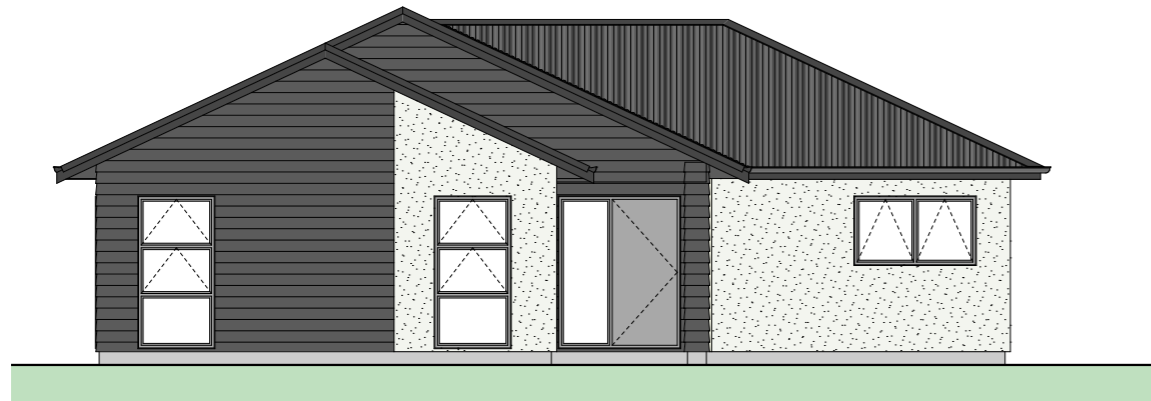


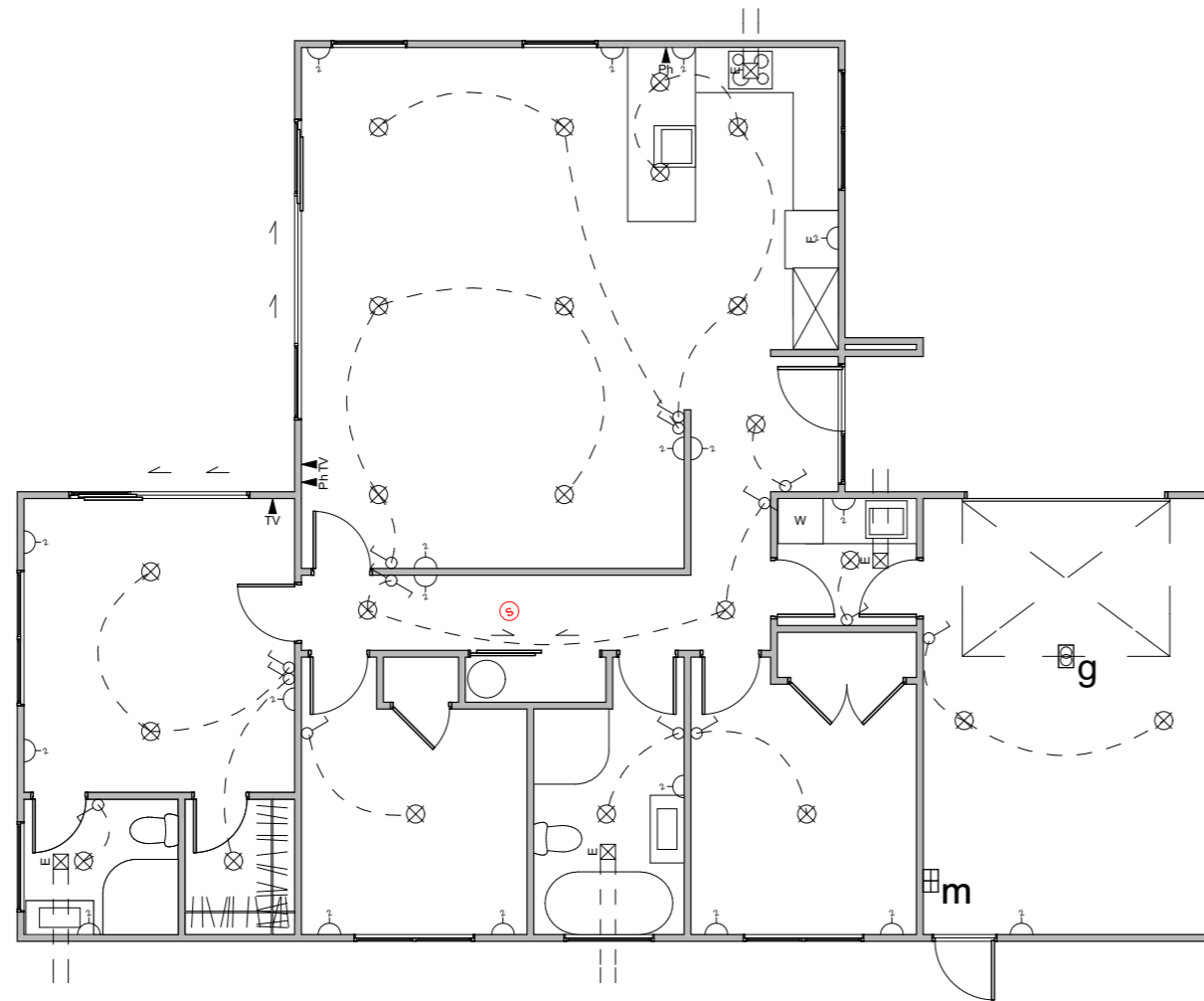
Floor Area = 139m²

Cladding = Linea Weatherboards on cavity


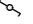
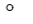


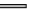


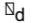





Cladding 2 = Rockcote on cavity

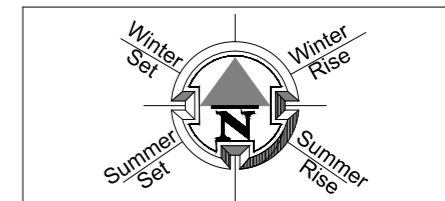
Roofing = Corrugated Colorsteel





Electrical Legend

-  Light switch
-  Two way light switch
-  Feature light
-  External wall light
-  Recessed downlight
-  Fluorecent light
-  Power point
-  Meter box
-  Distribution board
-  Garage door motor
-  Smoke detector
-  Extractor fan
-  Phone outlet
-  Television outlet



LEGEND	
	GRASS. HYDROSEED WITH 100MM TOPSOIL.
	BRUSHED FINISH CONCRETE.
	CONCRETE: EXPOSED AGGREGATE FINISH OR COLOURED FINISH OR SAWCUTS AT 0.6M CTRS
	STONES (PERMEABLE)
	STONES (PERMEABLE) WITH FLAGSTONE STEPPING STONES
	INDICATIVE BATTER BANK. REFER SURVEY DOCUMENTS FOR DETAILS.
	SERVICE AREA FOR BINS.
	LB LETTERBOX
	WL WASHING LINE
	1.8M HIGH ROUGH SAWN CLOSED BOARDED TIMBER FENCE.
	1.8M HIGH OPEN SLAT TIMBER SCREEN.
	1.5M HIGH HORIZONTAL OPEN SLAT TIMBER FENCE.
	1.2M HIGH HORIZONTAL OPEN SLAT TIMBER FENCE.
	INDICATIVE RETAINING WALL (REFER ENGINEERS DOCUMENTATION).

PRINT IN COLOUR
SCALE 1:200 @ A3
COPYRIGHT © HOUSE OF ORANGE DESIGN LTD

LANDSCAPE SCHEDULE OF AREAS:	
SITE AREA:	294 M ²
PERMEABLE AREA:	96.50 M ² (32.82%)
CONCRETE:	58.10 M ²
GARDEN:	26.36 M ²
LAWN:	33 M ²
STONES:	37.25 M ²
FENCE RS 1.8M:	5 LIN. M
SCREEN 1.8M:	- LIN. M
FENCE SLAT 1.5M:	28.50 LIN. M
FENCE SLAT 1.2M:	2.2 LIN. M
VEHICULAR CROSSING:	10 M ²
- FENCE LENGTH INCLUDES GATE. ALL GATES ARE BLACK POWDERCOATED.	
- 100X50 H5 GARDEN EDGING.	
- ALL RETAINING WALLS, BATTER BANKS, M ² AREAS, FENCING HEIGHTS AND LENGTHS ARE SUBJECT TO FINAL FINISHED GROUND LEVEL HEIGHT AND EARTHWORKS PLAN AND ARE SUBJECT TO CHANGE.	

NZ NATIVE

TYPE 1 PLANT SELECTION OPTIONS:

KEY	DESCRIPTION	AKE AKE	GRISELINIA	PITTOSPORUM
①	PLANT ATTRIBUTES: - EVERGREEN - HEDGING SELECTION			

TYPE 3 PLANT SELECTION OPTIONS:

KEY	DESCRIPTION	HOHERIA	KOWHAI	TITOKI
③	PLANT ATTRIBUTES: - NZ NATIVE - FEATURE TREE			

TYPE 5 PLANT SELECTION OPTIONS:

KEY	DESCRIPTION	APODASMA SIMILIS OIOI	ANEMANTHELE LESSONIANA 'WIND GRASS'	ARTHROPODIUM CIRRATUM 'RENGA RENGA'	ASTILIA BANKSII	COROKIA CULTIVARS	FLAX CULTIVARS	HEBE	LAVENDER	MUEHLENBECKIA ASTONII	PSEUDOPANAX CULTIVARS	UGNI MOLINAE 'NZ CRANBERRY'
⑤	PLANT ATTRIBUTES: - EVERGREEN - SHRUBS (1M)											

Placement	Colour	Sample/notes
Roof	Grey Friars	Corrugated Colorsteel
Fascia	Grey Friars	
Gutters	Grey Friars	
Downpipes	Grey Friars	
Soffites	Enclose 1/4	
Joinery	Grey Friars	
Cladding 1 - Linea Weatherboard	Resene Grey Friars (Colour Match)	
Cladding 2 - Rockcote on cavity	Resene Double Black White	
Schist	N/A	
Box corners	N/A	
Window surrounds	N/A	
Garage door - colour Profile	Grey Friars	Milano Woodgrain
Garage revels	Resene Grey Friars	Colour match to Watty1
Front door - colour Profile	Grey Friars	LAT00
Notes		