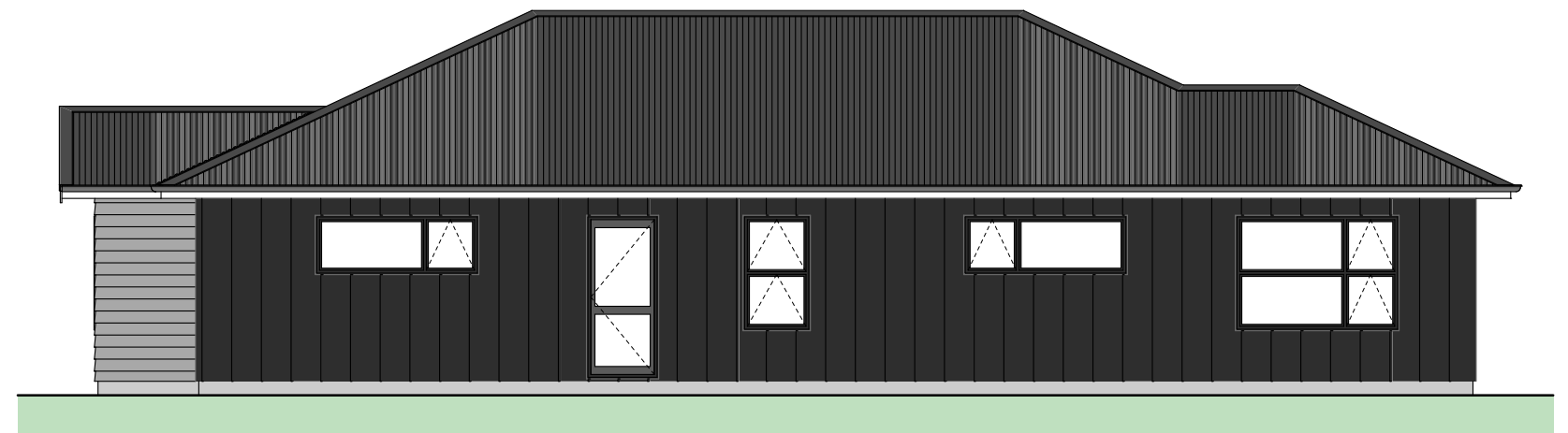
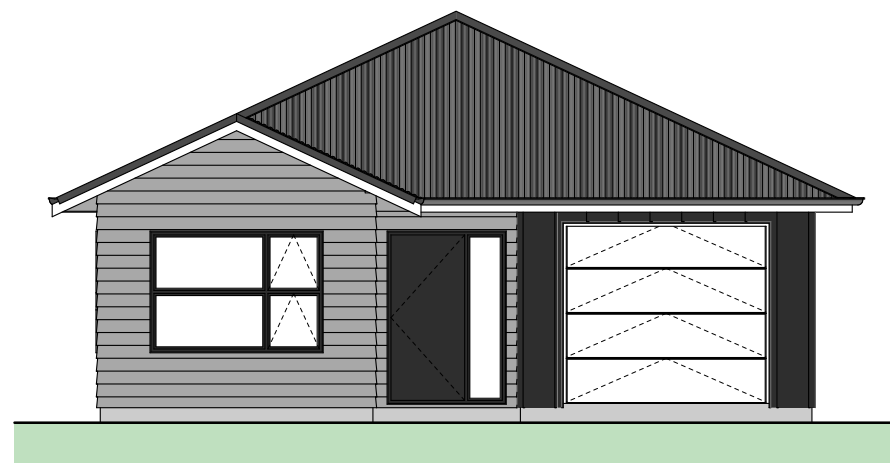
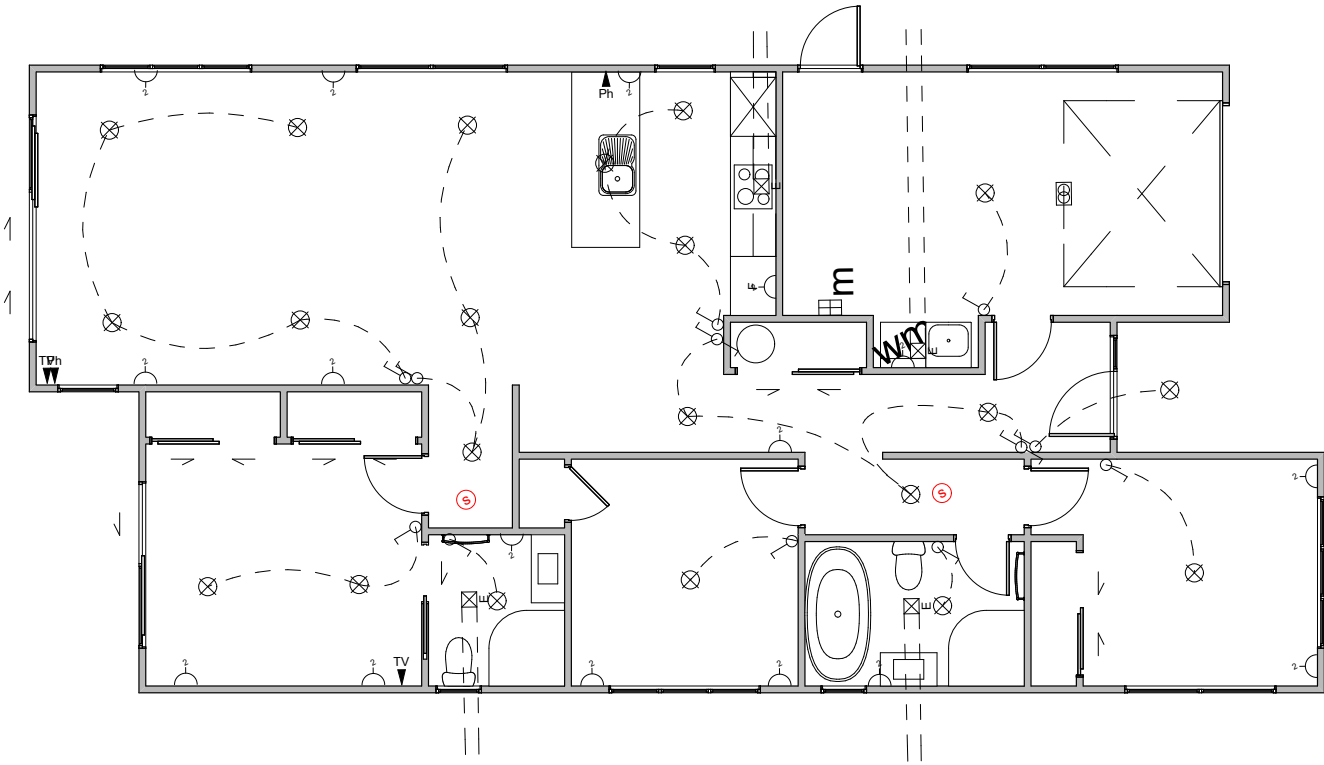


| | |
|-------------------|---------------------------------|
| Floor Area | = 127m² |
| Cladding 1 | = Linea Weatherboards on cavity |
| Cladding 2 | = Axon on cavity |
| Roofing | = Corrugated Colorsteel |





Electrical Legend

- Light switch
- Two way light switch
- Feature light
- External wall light
- Recessed downlight
- Fluorescent light
- Power point
- Meter box
- Distribution board
- Garage door motor
- Smoke detector
- Extractor fan
- Phone outlet
- Television outlet

Landscape Plan



NZ MODERN





TYPE 1 PLANT SELECTION OPTIONS:

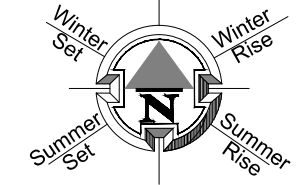
| FIVE PLANT SELECTION OF FIVE | | | | |
|--|--|---|---|---|
| KEY | DESCRIPTION | AKE AKE | GRISELINIA | PITTOSPORUM |
| ①  | PLANT ATTRIBUTES: - EVERGREEN - HEDGING SELECTION |  |  |  |

TYPE 4 PLANT SELECTION OPTIONS:

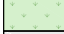









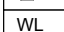



| KEY | DESCRIPTION | APODASMIA SIMILIS OIOI | ANEMANTHELE LESSONIANA 'WIND GRASS' | ARTHROPODIUM CIRRATUM 'RENGA RENG' | ASTILIA BANKSII | COROKIA CULTIVARS | FLAX CULTIVARS | HEBE | LAVENDER | MUEHLENBECKIA ASTONII | PSEUDOPANAX CULTIVARS | UGNI MOLINAE 'NZ CRANBERRY' |
|--|--|---|---|---|---|---|---|---|---|---|---|---|
| ④  | PLANT ATTRIBUTES: - EVERGREEN - SHRUBS (1M) |  |  |  |  |  |  |  |  |  |  |  |

TYPE 3 PLANT SELECTION OPTIONS:

| KEY | DESCRIPTION | HOHERIA | KOWHAI | TITOKI |
|--|--|---|---|---|
| <p>③</p>  | <p>PLANT ATTRIBUTES:</p> <ul style="list-style-type: none"> - NZ NATIVE - FEATURE TREE |  |  |  |



LEGEND

| | |
|--|---|
|  | GRASS. HYDROSEED WITH 100MM TOPSOIL. |
|  | BRUSHED FINISH CONCRETE. |
|  | CONCRETE: EXPOSED AGGREGATE FINISH OR COLOURED FINISH OR SAWCUTS AT 0.6M CTRS |
|  | STONES (PERMEABLE) |
|  | STONES (PERMEABLE) WITH FLAGSTONE STEPPING STONES |
|  | INDICATIVE BATTER BANK. REFER SURVEY DOCUMENTS FOR DETAILS. |
|  | SERVICE AREA FOR BINS. |
|  LB | LETTERBOX |
|  | WL WASHING LINE |
|  | 1.8M HIGH ROUGH SAWN CLOSED BOARDED TIMBER FENCE. |
|  | 1.8M HIGH OPEN SLAT TIMBER SCREEN. |
|  | 1.5M HIGH HORIZONTAL OPEN SLAT TIMBER FENCE. |
|  | 1.2M HIGH HORIZONTAL OPEN SLAT TIMBER FENCE. |
|  | INDICATIVE RETAINING WALL (REFER ENGINEERS DOCUMENTATION). |

PRINT IN COLOUR

SCALE 1:200 @ A3

COPYRIGHT © HOUSE OF ORANGE DESIGN LTD

LANDSCAPE SCHEDULE OF AREAS:

SITE AREA: 270 M²
 PERMEABLE AREA: 89.95 M² (33.31%)
 CONCRETE: 52.70 M²
 GARDEN: 32.25 M²
 LAWN: 14 M²
 STONES: 43.70 M²
 FENCE RS 1.8M: 10.50 LIN. M
 SCREEN 1.8M: 6 LIN. M
 FENCE SLAT 1.5M: 22 LIN. M
 FENCE SLAT 1.2M : 3.3 LIN. M
 VEHICULAR CROSSING: 9.6 M²
 -FENCE LENGTH INCLUDES GATE. ALL
 GATES ARE BLACK POWDERCOATED.
 - 100X50 H5 GARDEN EDGING.
 - ALL RETAINING WALLS, BATTER BANKS, M²
 AREAS, FENCING HEIGHTS AND LENGTHS
 ARE SUBJECT TO FINAL FINISHED GROUND
 LEVEL HEIGHT AND EARTHWORKS PLAN
 AND ARE SUBJECT TO CHANGE.