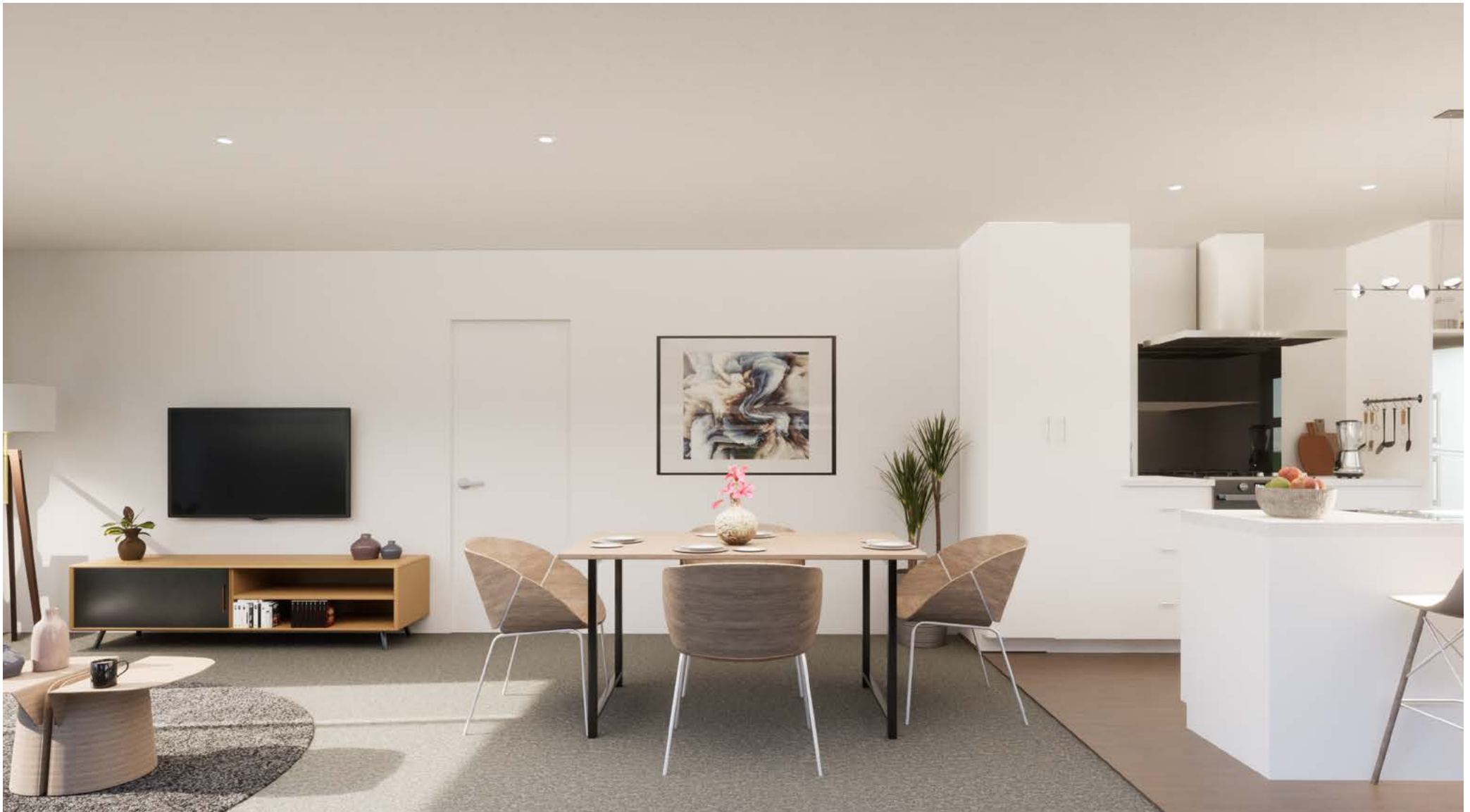


1-6 Peel Place.♦

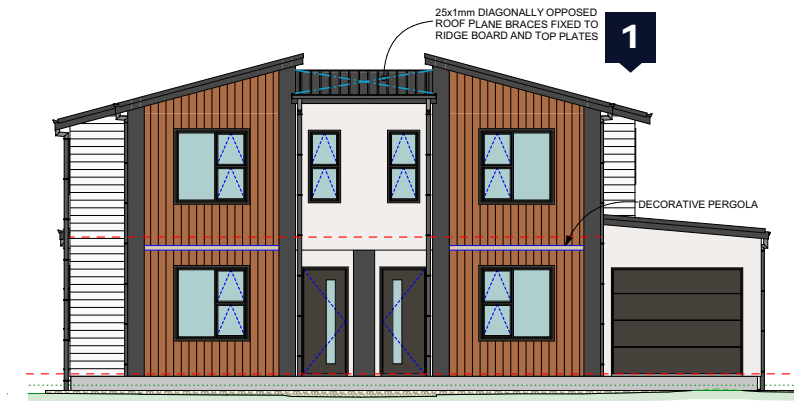
WAINUIOMATA

Detailed Plans

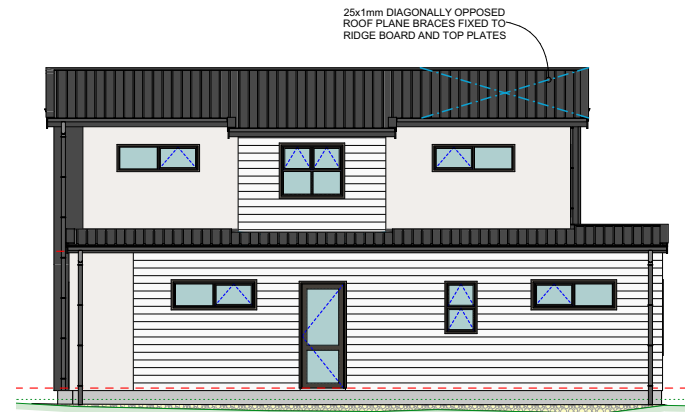








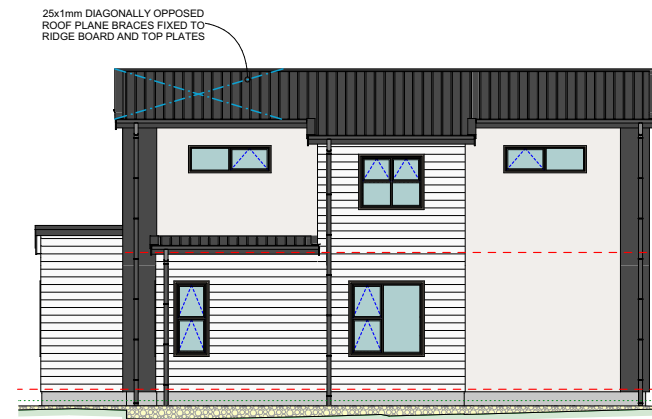
EAST



NORTH

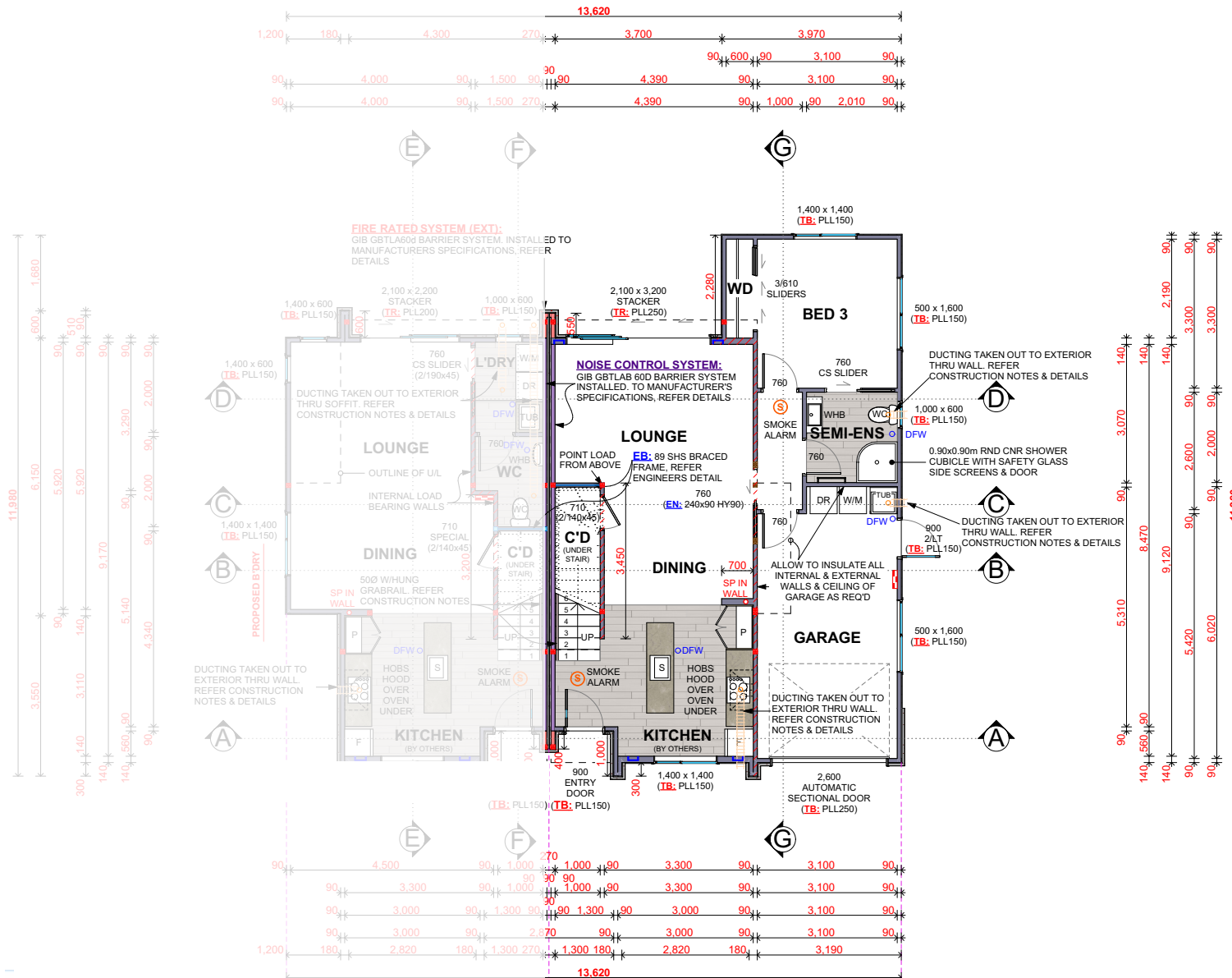


WEST

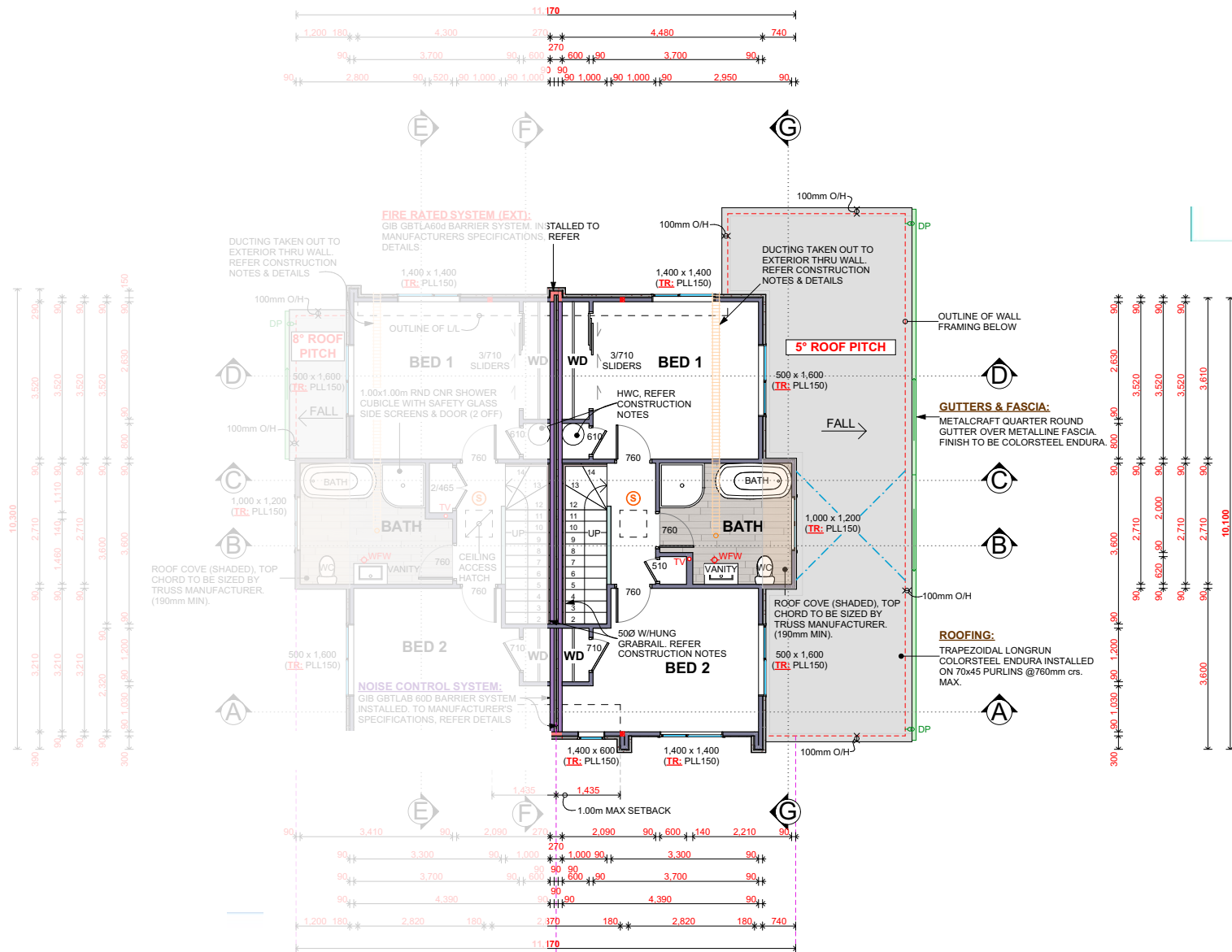


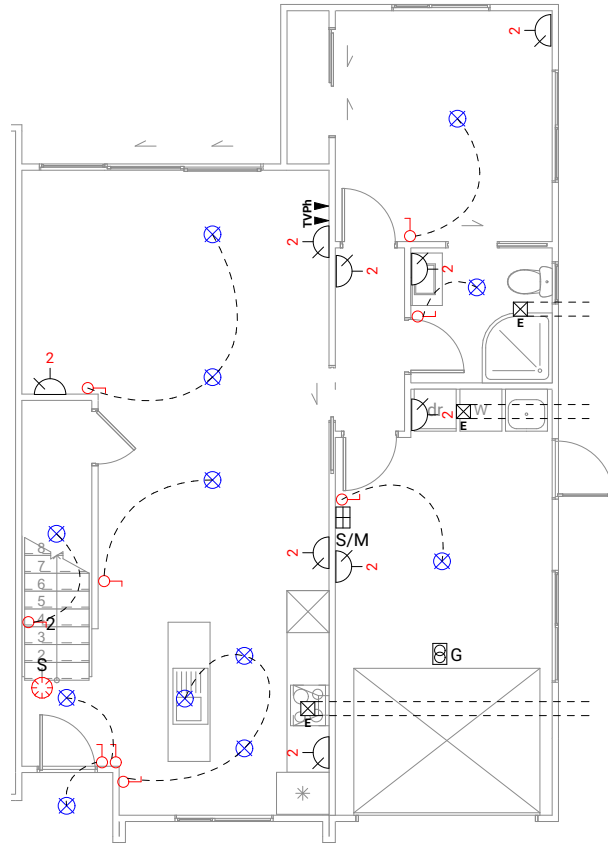
SOUTH

Total Floor Area: 129 sqm

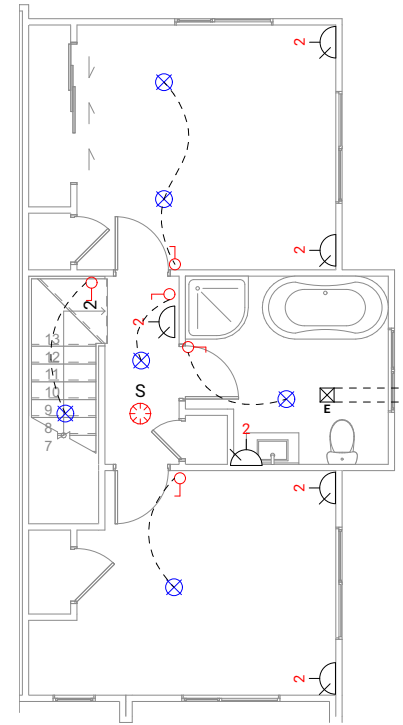


Total Floor Area: 129 sqm


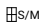
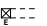
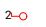
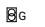




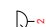




Lower Electrical Plan



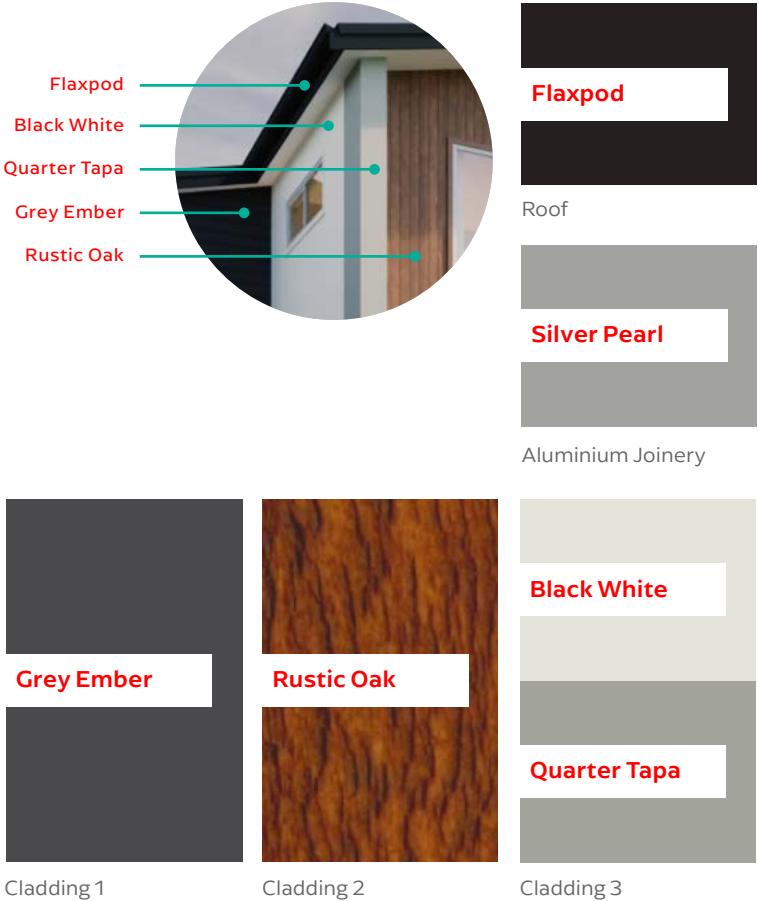
Upper Electrical Plan

	Light switch		Smart Meter		Extractor fan
	Two way light switch		Garage door motor		Phone outlet
	Recessed downlight		Smoke detector		Television outlet
	Power point				



	Product	Colour/Finish
EXTERIOR 1-6 PEEL PL		
Roof	Colorsteel Trapezoidal	Flaxpod
Fascia/Barge Boards	Colorsteel	Flaxpod
Spouting	Colorsteel	Flaxpod
Downpipes	Colorsteel OR Marley PVC Colour (if retention tank)	Flaxpod OR Ironsand
Retention Tank	ThinTanks	Monument
Soffits	Painted	Wattyl Enclose Half
Cladding 1	Linea weatherboard – painted	Wattyl Grey Ember
Cladding 2	Cedar – stained	Wattyl Forestwood Colour: Rustic Oak
Cladding 3	Rockcote Integra Panel (painted 2 colours – see render for clarification of locations)	Resene Black White AND Resene Quarter Tapa (feature)
Concrete Letterbox	Painted	Wattyl Grey Ember
Garage Door	Dominator Valero smooth	Flaxpod
Garage Door Reveal	Timber Painted	Wattyl Dolphin Grey
Aluminium Joinery (with clear glass)	Powdercoated	Silver Pearl
(Residential Hardware to all aluminium joinery is colour matched to joinery)		
Front Door	Vertical Groove	Flaxpod
Front Door Handle	Residential Lever Hardware	Powdercoat finish matched to door

Note: Decking and supporting timber posts and beams are left natural



All colour swatches are indicative only